



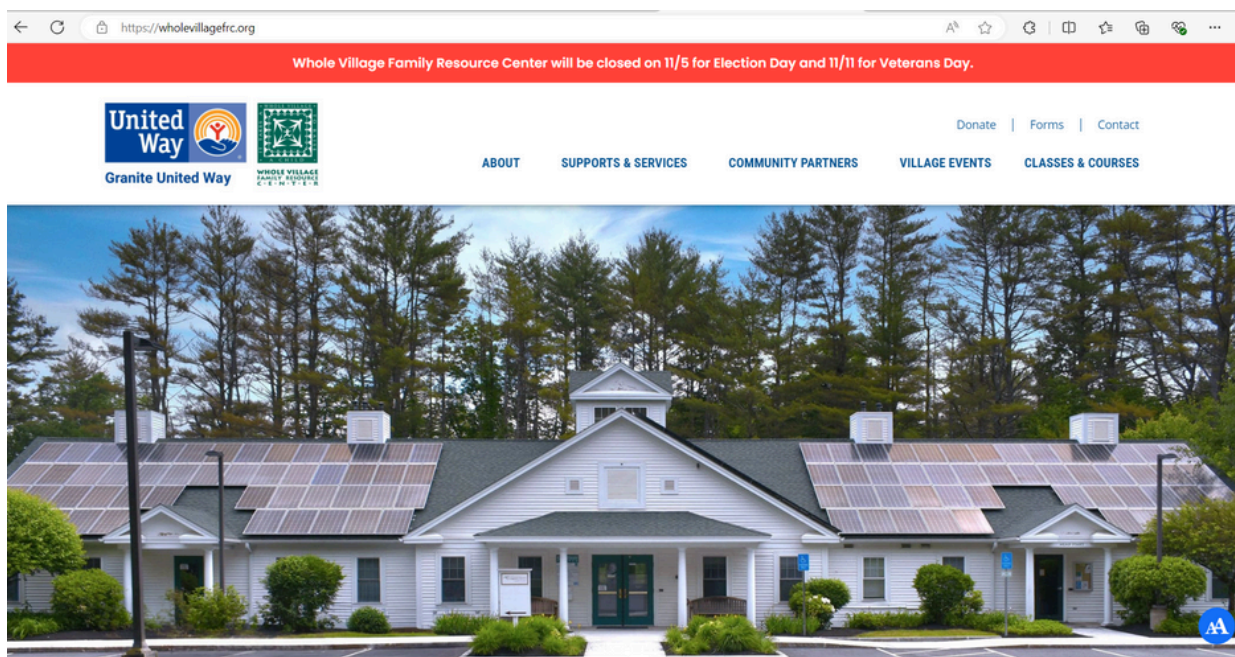
CLICK HERE TO DONATE



IT TAKES A **WHOLE VILLAGE** TO RAISE A CHILD

WHOLE VILLAGE WEBSITE

Whole Village Family Resource Center has launched a new website! Visit www.wholevillagefrc.org to explore a wealth of information at your fingertips. Discover events, resources, and details about our programs and coalition work. The site also features convenient links to partner agencies and frequently requested community resources, all designed to be easy to navigate.



CHECK OUT OUR NEW WEBSITE!

WHAT'S UPCOMING THIS QUARTER?

Tuesdays at 9:30 am: RAISE Playgroup Whole Village for families birth through age 5

Ongoing Tuesdays, 5:30 pm dinner, 6-8 class: Nurturing Skills Parent Education Classes. Childcare available! Register with Kristine.Perry@graniteuw.org

Creative Music and Movement sign up for March 3rd session 9:30-10:15 runs for 4 weeks Family music and movement with themes. Register Kristine.Perry@graniteuw.org

Pregnant and New Parent Coalition: meets the first Monday of every month at 1 pm. Contact Jennifer.Hunter@graniteuw.org for more information

The second Wednesday of every month at 8:30 am: Veteran's Coffee Hour at Whole Village

ACTIVITIES AT WHOLE VILLAGE

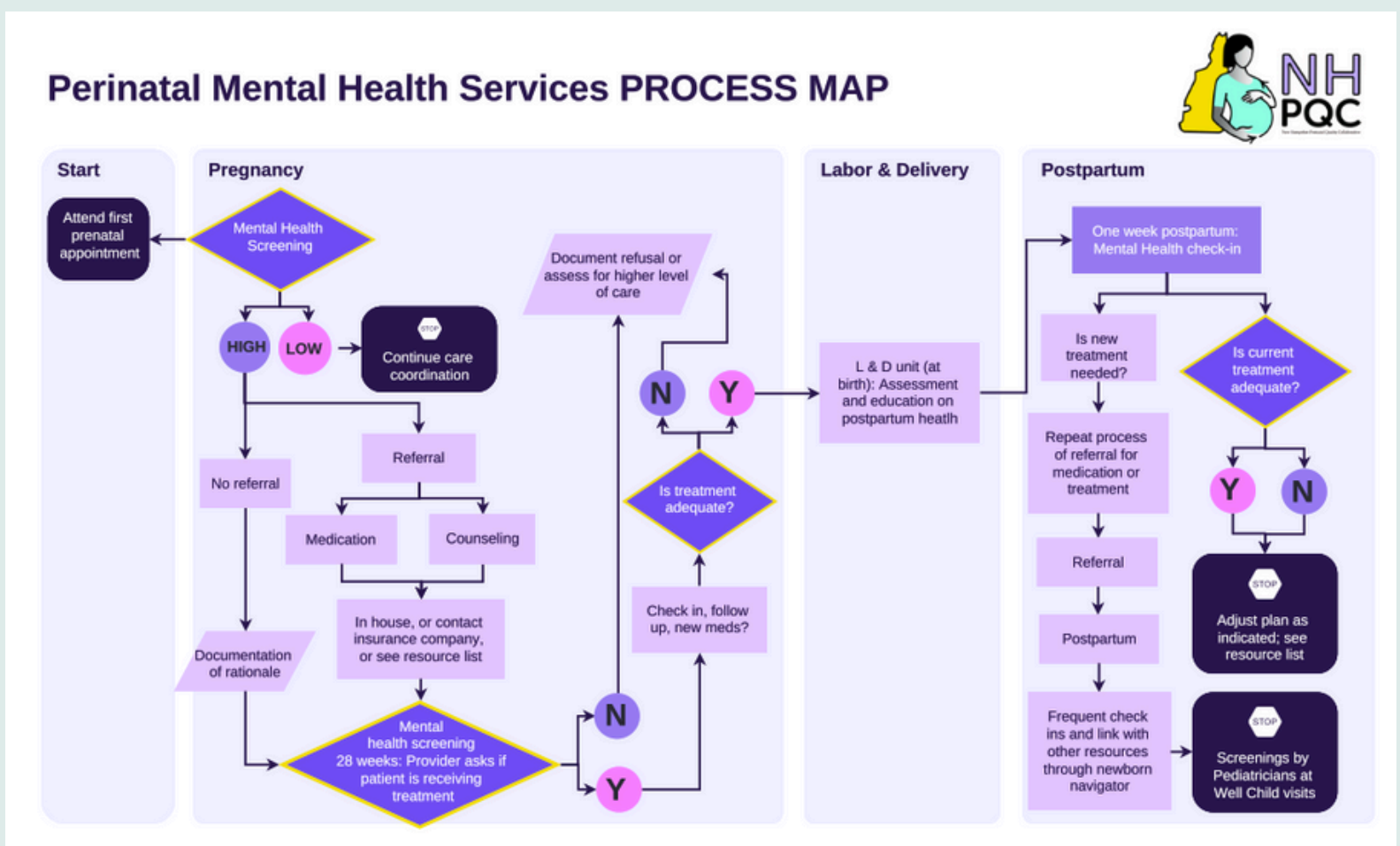
Angels and Elves

A special thank you to Kristine Perry for overseeing this phenomenal program. We can't run this program without the generosity of our community. Thank you for the wonderful donations from WellSense, Sons of American Legion Post 83, NH Electric Co-op, Speare Memorial Hospital, Campton Police Department, Conklin & Reynolds, Northway Bank, Granite United Way and many other generous individuals in our community! **We were able to help provide winter clothing to 40 families and 86 Children in 10 towns.**



Pregnant and New Parent Coalition

This group of dedicated parents and professionals are working with the New Hampshire Perinatal Quality Collaboration to create process maps and list resources specific to pregnant and new parents. We are identifying gaps and working to decrease the number of caregiver deaths in the first year. We offer hybrid meetings on the first Monday of the month at 1 p.m. If you would like to join this work, contact: Jennifer.Hunter@graniteuw.org



Central Region Veterans Coalition Resource Fair and BBQ

We had over 40 people join us for the Central NH Veteran's Coalition Fair and BBQ for veterans and their families to learn about the local programs and services available. Thank you Doug Moorhead for cooking for all of us!





Are you a veteran? Join the Central Region Veterans Coalition! Meetings occur both in person and on Zoom on the 4th Thursday of the month. We will be planning for the upcoming year and need Veteran's voices

Coffee hour will be held at 8:30 a.m. at Whole Village on the second Wednesday of the month. Come and share stories with other Veterans!

As we continue to focus on equity, diversity and inclusion, our military population is a culture of their own. This virtual training will help everyone in our community better acknowledge, talk with, identify and provide resources to our local veterans, first responders, and their families.



Recent Funding


Thankful for the Tosa and Edwin S. Webster Foundation grants and our private donors and sponsors for ongoing support to provide funds for our building, services, and programs. We also appreciate Plymouth Hannaford, the Covered Bridge Farm Table Restaurant, The Common Man Inn & Spa, and the Bridge House for providing dinner for fall parent education classes!

Family Fun Night!

Family fun was had by all! A shared meal, a few books, some singing, and crafts. Lots of holiday spirit was had!

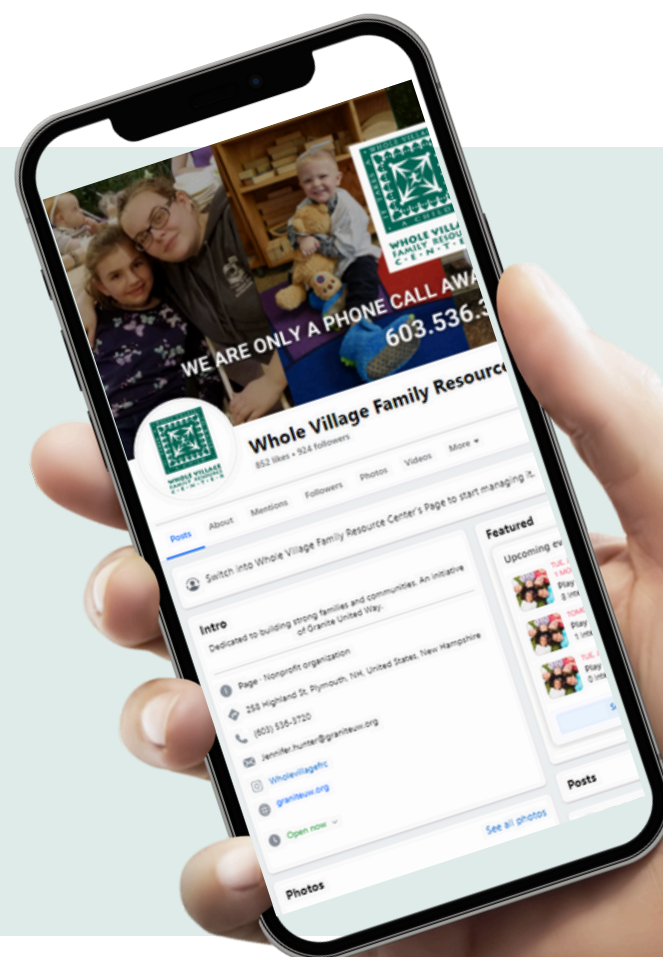


You are not alone! You can contact Whole Village in a variety of ways and keep up to date with events and opportunities with us online.

 603.536.3720

 wholevillagefrc.org

  Find us on Facebook and Instagram!



 [CLICK HERE TO DONATE](#)

When making a donation on Granite United Way's giving page, please be sure to designate your gift to Whole Village Family Resource Center!